



EoSens® GE CAMERA MANUAL

• HIGH SPEED CMOS CAMERA • HIGH SENSITIVITY •



EoSens GE Camera Manual
Camera-Firmware:
Camera ID:

Rev. 1.15
B2.02-V1.23-F1.16
MC1364-65

Functions described in this manual may not be available with firmware versions prior than above mentioned. Information presented in this publication has been carefully checked for reliability; however, no responsibility is assumed for inaccuracies. The information contained in this document is subject to change without notice.

Copyright © 2011 Mikrotron GmbH

Mikrotron GmbH
Landshuter Str. 20-22
D-85716 Unterschleissheim
Germany


Tel.: +49 89 726342 00
Fax: +49 89 726342 99
info@mikrotron.de
www.mikrotron.de



Table of contents

1	General	4
1.1	For customers in the U.S.A.	4
1.2	For customers in Canada	4
1.3	Pour utilisateurs au Canada	4
1.4	Life Support Applications	4
1.5	Declaration of conformity	5
1.6	Warranty Note	6
1.7	Remarks, Warnings	6
2	Introduction	7
2.1	Top level specifications	7
2.2	Electronic “Freeze Frame” Shutter	7
2.3	Differences between the camera types	8
2.4	Using the camera	8
3	Hardware	9
3.1	GigE Vision® interface	9
3.2	Power supply	9
3.3	Status LED	9
4	Getting started	10
4.1	First steps	10
5	Initial setup	11
5.1	Serial number and firmware revision	11
5.2	PowerUpProfile	11
5.3	Camera profile	11
5.4	Factory profiles	11
5.5	User profiles	12
5.6	PowerUpProfile	12
6	Configuration	13
6.1	GenICam® command interface	14
6.1.1	Command overview	14
6.2	Image size and position	15
6.2.1	Setting the ROI, commands: OffsetX, OffsetY, Width and Height	15
6.2.2	Setting multiple ROI's, commands: MultiROICount, MultiROIOffset	15
6.2.3	Invert readout in x- and or y-direction, commands: ReverseX, ReverseY	16
6.2.4	DecimationXY mode (Subsampling), command: DecimationXY	16
6.3	Framerate and shutter	17
6.3.1	Setting the framerate, command: AcquisitionFrameRateAbs	17
6.3.2	Setting the shuttertime, command: ExposureTimeRaw	17
6.3.3	Automatic shutter time control, command: AutoShutter	17
6.3.4	Setting the slopes for dynamic range adjustment, command: MultipleSlope	18
6.3.5	Non destructive readout for multi exposure, command: NonDestructiveReadout	18
6.4	Exposure control	19
6.4.1	Type of exposure, command: ExposureMode	20
6.4.1.1	Timed	20
6.4.1.2	Trigger width	20
6.4.1.3	Trigger controlled	20
6.5	Image quality	21
6.5.1	Digital gain, command: DigitalGain	21
6.5.2	Blacklevel, command: BlackLevelRaw	21
6.5.3	FPN correction, command: FPNEnable	22
6.6	Other	23
6.6.1	In frame counter, command: InFrameCount	23
6.6.2	Test image, command: TestImageSelector	23
6.6.3	Setting threshold mode, command: GrayThreshold (optional feature)	24

6.6.4 Setting binarization mode, command: BinaryModeEnable (optional feature).....	24
6.6.5 Read firmware version, command: FirmwareVersion.....	24
7 MC Control Tool.....	25
8 Firmware.....	26
8.1 Microcontroller firmware.....	26
8.2 FPGA firmware.....	26
8.3 Firmware update procedure.....	27
9 Technical Data.....	28
9.1 Overview.....	28
9.2 Sensor defect specifications.....	29
9.3 Spectral response.....	30
9.4 Bayer pattern filter.....	31
9.5 Connector pinning.....	32
9.5.1 Gigabit Ethernet Connector.....	32
9.5.2 Circular power connector, 12-pin.....	32
9.6 Timing diagrams.....	33
9.6.1 Timed (Free run with electronic shutter).....	33
9.6.2 Trigger width (Pulsewidth mode).....	33
9.6.3 Trigger Controlled (External sync with internal timer).....	33
9.7 Mechanical dimensions.....	34
10 Quick start guide for GigE Vision®.....	35
10.1 Software installation.....	35
10.2 Install the EBus Driver.....	35
10.3 Configure the network card.....	36
10.4 Connecting using the GEV Player.....	37
10.5 Camera configuration.....	38



1 General

1.1 For customers in the U.S.A.

This equipment has been tested and found to comply with the limits for a Class A digital device, pursuant to Part 15 of the FCC Rules. These limits are designed to provide reasonable protection against harmful interference when the equipment is operated in a commercial environment. This equipment generates, uses, and can radiate radio frequency energy and, if not installed and used in accordance with the instruction manual, may cause harmful interference to radio communications. Operation of this equipment in a residential area is likely to cause harmful interference in which case the user will be required to correct the interference at his own expense. You are cautioned that any changes or modifications not expressly approved in this manual could void your authority to operate this equipment. The shielded interface cable recommended in this manual must be used with this equipment in order to comply with the limits for a computing device pursuant to Subpart J of Part 15 of FCC Rules.

1.2 For customers in Canada


This apparatus complies with the Class A limits for radio noise emissions set out in Radio Interference Regulations.

1.3 Pour utilisateurs au Canada

Cet appareil est conforme aux normes Classe A pour bruits radioélectriques, spécifiées dans le Règlement sur le brouillage radioélectrique.

1.4 Life Support Applications

These products are not designed for use in life support appliances, devices, or systems where malfunction of these products can reasonably be expected to result in personal injury. Mikrotron customers using or selling these products for use in such applications do so at their own risk and agree to fully indemnify Mikrotron for any damages resulting from such improper use or sale.



1.5 Declaration of conformity

Manufacturer: **Mikrotron GmbH**

Address: Landshuter Str. 20-22
85716 Unterschleissheim
Germany

Product: **Camera MC1364, MC1365**

The dedicated products conform to the requirements of the Council Directives 2004/108/EG for the approximation of the laws of the Member States relating to electromagnetic consistency. The following standards were consulted for the conformity testing with regard to electromagnetic consistency.

EC regulation	Description
EN 61000-6-3	Electromagnetic compatibility
EN 61000-6-1	Immunity

Unterschleissheim, October 04, 2007

Mikrotron GmbH

Dipl.-Ing. Bernhard Mindermann
President of Mikrotron

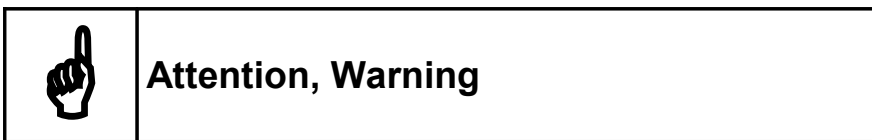


1.6 Warranty Note

Do not open the body of the camera. The warranty becomes void if the body is opened.

1.7 Remarks, Warnings

This document contains important remarks and warnings. See the corresponding symbols:



2 Introduction

The CMOS high speed camera EoSens is a high resolution camera with 1280x1024 pixel. Benefits of CMOS technology are high speed, random access to pixels with free programmability and low power.

The camera uses industry-standard C-Mount or F-Mount lenses. The sensor diagonal is 22.9 mm with square pixels measuring 14 μm .

Free programmability means that the user is free to define the region of interest by size and position and the speed of data output. The frame rate can be selected between 1 fps and several thousand fps depending on resolution and video data width.

With a resolution of 1280 x 1024 pixel, 80 fps can be output via the “GigE Vision[®]” Interface.

2.1 Top level specifications

- High resolution: 1280x1024 pixel CMOS sensor
- up to 1024 gray levels (10bit resolution)
- up to 80 full frames/s
- arbitrary region of interest
- very high sensitivity
- 14 μm square pixels
- electronic “Freeze Frame” shutter
- low blooming
- programmable via GigE Vision[®] interface
- asynchronous trigger
- small, compact housing
- wide power supply range

2.2 Electronic “Freeze Frame” Shutter

Preceding exposure, the contents of all light sensitive elements is cleared. When exposure terminates, accumulated charge is transferred to an analog memory associated with each pixel. It stays there until it is read out (and discharged) by the A/D conversion cycle.

As all light sensitive elements are exposed at the same time, even fast moving objects are captured without geometric distortion.



2.3 Differences between the camera types

The CMOS cameras are available in different versions depending on the supported features monochrome or color.

Features Type	Data width (bits)	Color/ Mono	C/F-Mount lens adaptation	max. frame rate @ 1280 x 1024	Image pre-processing supported
MC1364	8/10	M	C/F	80 fps	-
MC1365	8/10	C	C/F	80 fps	-

table 1: camera types

2.4 Using the camera

There are no serviceable parts inside the camera. The camera may not be opened, otherwise guarantee is lost.

Use dry, soft lens-cleaning tissue for cleaning lenses and, if necessary, the sensors window.

3 Hardware

3.1 GigE Vision® interface


GigE Vision® is designed for digital cameras in machine vision applications. This interface can transfer data at a rate of 110 Mbytes/sec.

The GigE Vision® chipset and software is designed and implemented by Pleora Tech. Inc. the leading supplier of GigE Vision technology. Please refer to the PT1000 documentation for further information.

3.2 Power supply

The camera needs a DC supply voltage between 8 ... 24V at a power consumption of 6 Watt max.

See also Connector pinning.

	<p>Before applying power to the camera we strongly recommend to verify the used pins of the power connector, the polarity (+/-) of the leads and the supply voltage.</p> <p>The camera may only be used with a supply voltage according to the camera specification. Connecting a lower or higher supply voltage, AC voltage, reversal polarity or using wrong pins of the power connector may damage the camera. If doing so, the warranty will expire immediately.</p>
---	--

3.3 Status LED

A dual color LED on the camera backplane shows the operating condition of the *EoSens*.

LED orange...	The <i>EoSens</i> is configuring the internal FPGA. No other activity is possible.
LED green...	The <i>EoSens</i> is fully operational.
LED off...	If LED is off, despite the camera is powered, data is stored to the internal EEPROM. No other activity is possible.
LED red...	The microcontroller detected a wrong checksum or the FPGA could not be loaded because of wrong FPGA configuration data. The camera is not functional. Try to reload configuration data.
LED red blinking...	Data is loaded to microcontroller or FPGA from the PC or the camera verifies the checksum. No other activity is possible.

4 Getting started

Before starting to operate the camera, make sure that the following equipment is available:

- Camera EoSens
- C-Mount/F-Mount Lens
- Mikrotron Support CD
- Image processing system, e.g.: PC and Software

Additional items:

- 1 Ethernet Cable
- 1 Power supply 12VDC, 0.75A min
- 1 power cable



To specify cables see chapter Connector pinning.

4.1 First steps

- Switch off the image processing system
- Connect Ethernet cable between camera and PC.
- Connect power cable.
- Unscrew dust protection cover, screw in lens.
- Switch on the image processing system and camera power supply

5 Initial setup

The EoSens is delivered with initial parameters and therefore does not need to be configured via the serial link.

5.1 Serial number and firmware revision

Serial number and firmware revision is provided in EoSens non volatile memory and can be read via software. The serial number is also marked on the type plate of the camera.

5.2 PowerUpProfile

The PowerUpProfile is the content of all camera registers to be loaded from non-volatile memory after power up.

5.3 Camera profile

The actual set of parameters is called Camera Profile. All changes of parameters by the serial link is reflected in the Camera Profile. On command the Camera Profile is saved to 4 user profiles or the PowerUpProfile. It is loaded from the PowerUpProfile, 4 user profiles or 4 factory profiles. The camera profile is volatile and must be stored to the PowerUpProfile to be reactivated on next power up.

5.4 Factory profiles

The factory profiles can be read but not written by the user. They are factory preset to the settings described below.

Profile Nr.	Video data width /Mbyte/s	resolution / pixel	Image frequency /fps
0	92	640x480	300
1	106	1280x1024	81
2	31	640x480	100
3	26	1280x1024	20

5.5 User profiles

The user can store up to four User Profiles in non volatile memory. All load or write commands exchange data between the Camera Profile and one of the four user profiles.

Profile Nr.	Video data width /Mbyte/s	resolution / pixel	Image frequency /fps
0	92	640x480	300
1	106	1280x1024	81
2	31	640x480	100
3	26	1280x1024	20

5.6 PowerUpProfile

The user can store one PowerUpProfile in non volatile memory.

Profile Nr.	Video data width /Mbyte/s	resolution / pixel	Image frequency /fps
c	26	1280x1024	20

6 Configuration

The content of all *EoSens* registers is called a profile. There is space in non volatile memory for 9 profiles: The PowerUpProfile, 4 user profiles and 4 factory profiles.

Any change of a specific register through the serial interface is immediately processed and written to the volatile part of the memory and gets lost when power goes down. A command must be used to store the actual setting in non volatile memory. After power-up the PowerUp-Profile is loaded from the non-volatile to the volatile part of the memory.

A load or write command exchanges data between the CameraProfile and one of the four user profiles. The four factory profiles can be read but not be written by any command. All values are given in hexadecimal notation, e.g.: 0xff or 0ffh = 255.



6.1 GenICam® command interface

GenICam® commands are used to change camera parameters.

6.1.1 Command overview

Beside all mandatory commands like 'DeviceModelName' the following GenICam® features are implemented:

GenICam® feature	Function	Chapter
Width	Set image width	6.2.1
Height	Set image height	6.2.1
OffsetX	Set ROI offset x	6.2.1
OffsetY	Set ROI offset y	6.2.1
MultiROI10ffsetX	Set multi ROI 1 offset x	6.2.2
MultiROI10ffsetY	Set multi ROI 1 offset y	6.2.2
MultiROI20ffsetX	Set multi ROI 2 offset x	6.2.2
MultiROI20ffsetY	Set multi ROI 2 offset y	6.2.2
MultiROI30ffsetX	Set multi ROI 3 offset x	6.2.2
MultiROI30ffsetY	Set multi ROI 3 offset y	6.2.2
MultiROICount	Set number of multi ROI windows to activate	6.2.2
ReverseX	Flip image horizontal	6.2.3
ReverseY	Flip image vertical	6.2.3
DecimationXY	Decimation (subsampling) mode	6.2.4
AcquisitionFrameRateAbs	Set framerate	6.3.1
ExposureTimeRaw	Set exposure time	6.3.2
Auto shutter	Automatic shutter time adjustment	6.3.3
MultipleSlopeMode	Select multiple slope mode	6.3.4
MultipleSlopeDualAbs	Set dual slope value	6.3.4
MultipleSlopeTripleAbs	Set triple slope value	6.3.4
NonDestructiveReadout	Select non destructive readout mode	6.3.5
ExposureMode	Set exposure mode	6.4.1
EXPPolarity	Set exposure polarity	6.4.1
DigitalGain	Set digital gain	6.5.1
BlackLevelRaw	Adjust blacklevel	6.5.2
FPNEnable	Switch on/off FPN correction	6.5.3
InFrameImageCount	Switch on/off in frame counter	6.6.1
TestImageSelector	Switch on/off test image	6.6.2
GrayThresholdEnable	Switch on/off threshold mode (optional feat.)	6.6.3
GrayThresholdAbs	Set threshold value (optional feat.)	6.6.3
BinaryModeEnable	Switch on/off binarization mode(optional feat.)	6.6.4
FirmwareVersionBootloader	Read bootloader firmware version	6.6.5
FirmwareVersionController	Read controller firmware version	6.6.5
FirmwareVersionFPGA	Read FPGA firmware version	6.6.5

6.2 Image size and position

6.2.1 Setting the ROI, commands: OffsetX, OffsetY, Width and Height

Image size and position within the sensor is defined by four parameters:

Command	Description		Value
OffsetX	Address of first pixel	(x-start)	0...4F8 _{hex (modulo 24)}
OffsetY	Address of first line	(y-start)	0...3FE _{hex}
Width	X-width	(x-width)	8...500 _{hex (modulo 8)}
Height	Y-height	(y-height)	1...400 _{hex}

6.2.2 Setting multiple ROI's, commands: MultiROICount, MultiROIOffset

Commands:

MultiROI1offsetX	0...4f8 _{hex}
MultiROI1offsetY	0...3fe _{hex}
MultiROI2offsetX	0...4f8 _{hex}
MultiROI2offsetY	0...3fe _{hex}
MultiROI3offsetX	0...4f8 _{hex}
MultiROI3offsetY	0...3fe _{hex}
MultiROICount	0...3 number of ROI windows to activate

Description: With this command multiple ROI's are activated and controlled. EoSens allows to simultaneously choose up to four individual ROI's within the complete frame range. Thus, multiple objects can be captured independently at the same time. Normally only one window is active. This is the default of MultiROICount = 0. With MultiROICount >=1 up to 3 additional windows can be activated. So a total of maximal 4 windows can be active. Each window can have its own start address. The size of the additional windows is the same as the main ROI.

Note: In contrast to normal mode with x-start modulo of 24 in multiple ROI mode the x-start modulo is 48 beginning with 0 or 24 depending on the main ROI. If multiple ROI's are active also the main ROI is locked to modulo 48. Start addresses not fitting this modulo will be automatically rounded by the camera and can be checked with the read command. Note also that when changing the size of the main ROI the additional ROI's will be changed automatically. So take care that these ROI's will fit into the sensor size. Also the maximum framerate will decrease if multiple windows are active.

Remark: This mode can not be combined with ReverseX/Y mode or Decimation mode.



6.2.3 Invert readout in x- and or y-direction, commands: ReverseX, ReverseY

Commands: ReverseX, ReverseY

Description: This feature allows to flip the frame in x- and or y-direction.

Remark: This mode can not be combined with Decimation mode or MultiROI mode.

6.2.4 DecimationXY mode (Subsampling), command: DecimationXY

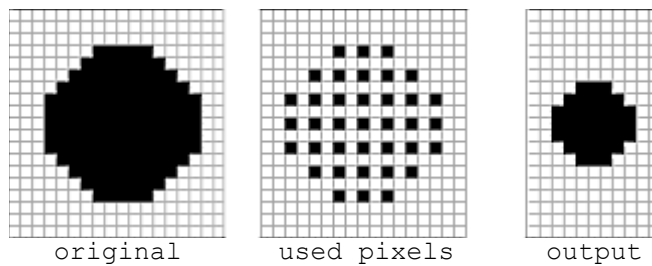
Command: DecimationXY off ; on

Description: With this feature enabled the sensor skips every other row and column. Therefore the maximum width is 640 pixel and the maximum height is 512 pixel. The advantage is that a lens with the same focal distance can cover the identical image size but with a higher framerate.

Note: A ROI of 640x512 covers the whole sensor area and equals the reproduction scale of 1280x1024 in normal mode. Switching on/off this mode halves/doubles the output image size.

Limitation: The ROI x-start position should be zero because else the internal FPN correction does not work correct. If a x-start position >0 is needed the internal FPN correction should be turned off. If necessary a correction must be done in software.

Remark: This mode can not be combined with ReverseX/Y mode or MultiROI mode.



6.3 Framerate and shutter

6.3.1 Setting the framerate, command: AcquisitionFrameRateAbs

Command: AcquisitionFrameRateAbs

Range: <xxxxxxx> = 1...3b49_{hex}

Description: With this command the framerate (unit Hz) in free run mode can be set.

Note: The actual range depends on the current ROI.

6.3.2 Setting the shuttertime, command: ExposureTimeRaw

Command: ExposureTimeRaw

Range: <xxxxxxx> = 2...F4240_{hex}

Description: With this command the shuttertime (unit μ S) in free run and sync with timer mode can be set. Depending on the ROI the minimal and maximal shuttertime can vary. If maximal value for shuttertime is set, the camera will expose 1/framerate.

6.3.3 Automatic shutter time control, command: AutoShutter

Command:	ASEnable	<x>	= 0...1 (off, on)
	ASBright	<xx>	= 00...FF _{hex}
	ASPercent	<xx>	= 01...64 _{hex}
	ASHysteresis	<xx>	= 00...64 _{hex}
	ASSpeed	<xx>	= 00...64 _{hex}
	ASMin	<xxxxxxx>	= 000000...FFFFFF _{hex}
	ASMax	<xxxxxxx>	= 000000...FFFFFF _{hex}

Description: This feature automatically adjusts the shuttertime depending on the object brightness. This results in a constant image brightness. To adjust the desired image brightness the pixelvalue (brightness) <aa> for <bb> percent of the image size must be set. Additionally a hysteresis can be set to prevent flickering. The adjust speed can also be set. Furthermore it's possible to limit the minimum and maximum shuttertime.

Example: For a typical scenery a brightness of 170 for 50 percent of the image is a good value. To use this setting with 20 percent hysteresis, 95 percent of the possible adjust speed and without shutter time limitation use:

ASEnable	True
ASBright	AA _{hex}
ASPercent	32 _{hex}
ASHysteresis	14 _{hex}
ASSpeed	5F _{hex}
ASMin	000000 _{hex}
ASMax	FFFFFF _{hex}

6.3.4 Setting the slopes for dynamic range adjustment, command: MultipleSlope

Command: MultipleSlope
 Range: MultipleSlopeMode <n> = 1...3 (Number of slopes)
 MultipleSlopeDualAbs <xx> = 1...63_{hex} (percent)
 MultipleSlopeTripleAbs <xx> = 1...63_{hex} (percent)

Description: This command sets the multiple slope function for dynamic range adjustment. Through 2 selectable steps, the camera’s dynamic range adjustment option allows to approach the CMOS sensor’s linear range into a dynamic range corresponding to the non-linear human eye. Consequently, EoSens provides definite image details even in case of extreme dark-light contrasts, which means an invaluable benefit exceptionally in image processing. With 'n'=1 the multiple slopes are deactivated and the frame will be exposed with the whole shuttertime. With activated slopes the bright pixels will be reset after <xx>percent of the shuttertime. The dual value must be smaller than triple. Depending on the mode, ROI and shuttertime the first slope can eventually not start at 1 percent. Only if valid values are set the function can be activated.



multiple slope off



triple slope activated

6.3.5 Non destructive readout for multi exposure, command: NonDestructiveReadout

Command: NonDestructiveReadout
 Range: <x> = 1...7

Description: This command controls the non destructive readout mode. If desired, pixel exposure can be accumulated up to 7 times, resulting in alternative image exposures. The optimally exposed image can be selected for further processing. At indefinite lighting conditions, as in 24 hour outdoor applications, EoSens becomes the high speed camera that spots everything. With x=1 after every frame the pixels are reset (normal operation). With x>1 all pixels will be read out multiple times (max. 7) after they are reset. So for low light the last samples are useful and for high light levels the first samples are useful.



6.4 Exposure control

Exposure control is selected with commands ExposureMode, EXPPolarity and ExposureTimeRaw.

Command	Description
ExposureMode	Select exposure mode
EXPPolarity	Select trigger edge
ExposureTimeRaw	Set exposure time



6.4.1 Type of exposure, command: ExposureMode

The EoSens can expose the images in free run mode or with an external signal. The external modes are used to synchronize EoSens cameras to each other or to an external event.

The following modes can be selected:

ExposureMode	Mode description	Trigger edge	Shuttertime
Timed	Free run with electronic shutter	--	ExposureTimeRaw
TriggerWidth	Pulsewidth, positive edge	EXPPolarity	By pulsewidth
TriggerWidth	Pulsewidth, negative edge	EXPPolarity	By pulsewidth
TriggerControlled	External sync with internal timer, positive edge	EXPPolarity	ExposureTimeRaw
TriggerControlled	External sync with internal timer, negative edge	EXPPolarity	ExposureTimeRaw

6.4.1.1 Timed

In free run mode the framerate and shuttertime can be selected with camera settings. Depending on tap mode and ROI the framerate can be set from 1...15000 fps and the exposure time can be set from 2 μ s to 1s.

6.4.1.2 Trigger width

In this mode an external signal starts exposure and the exposed image is output immediately after the exposure ends. Exposure time is defined by the width of the external TRIG signal. The exposure of the next image can be started while the last image is transferred or at a later time.

6.4.1.3 Trigger controlled

In this mode an external signal starts exposure and the exposed image is output immediately after the exposure ends. Exposure time is defined by an internal timer. The exposure of the next image can be started while the last image is transferred or at a later time.

6.5 Image quality

6.5.1 Digital gain, command: DigitalGain

Command: DigitalGain

Range : <xxxx> = 0 or 0400...1000_{hex}

Description: The digital gain can be set from 0400_{hex} which is equivalent to gain 1x to 1000_{hex} which is equivalent to gain 4x. Setting the gain to 0 switches off the correction completely.

6.5.2 Blacklevel, command: BlackLevelRaw

Command: BlackLevelRaw

Range: <XX> = 32...C8_{hex}

Description: This command adjusts blacklevel. The value 80_{hex} is the factory calibrated default. Increase or decrease this value slightly to adjust blacklevel.

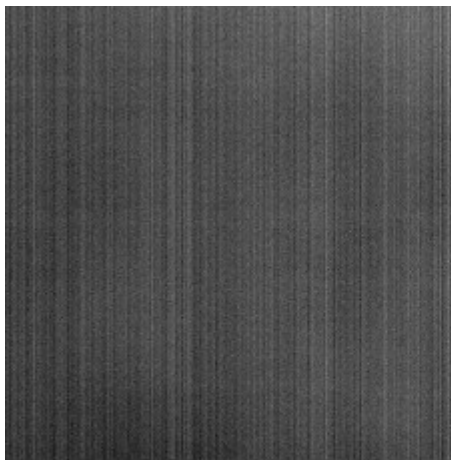


6.5.3 FPN correction, command: FPNEnable

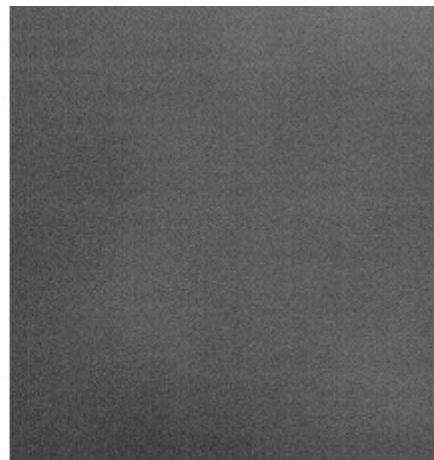
Command: FPNEnable

Description: With this command the column FPN (fixed pattern noise) correction can be activated or deactivated. At the beginning of each frame, before visible lines are read out, a fixed voltage is applied at the columns. These values are read out like real data and are stored inside the camera. When FPN correction is enabled the stored value is subtracted of each pixel. The advantage is a more homogeneous picture but with a limited dynamic.

Note: This noise is not dynamic but fixed (as the name says). That's a typical effect of a CMOS sensor. But the fixed pattern makes it easy to eliminate this noise completely. The camera does only a column correction. If an accurate pixel correction of the full frame is required this must be done in the imaging software. To do this it's best to switch off the camera's FPN correction to get the original dynamic. Then a complete image of a uniform area must be stored as a reference. This values must be subtracted for each pixel of the frame and the noise will disappear.



Camera's FPN correction OFF



and ON

6.6 Other

6.6.1 In frame counter, command: InFrameCount

Command: InFrameCount

Description: If a sequence of frames is to be recorded for long time at a high frame rate, it can be useful to mark the images for later identification or check for completeness. *EoSens* has a 32-Bit image counter whose count can replace the first four pixel of every image. It is incremented by every new image.

6.6.2 Test image, command: TestImageSelector

Command: TestImageSelector

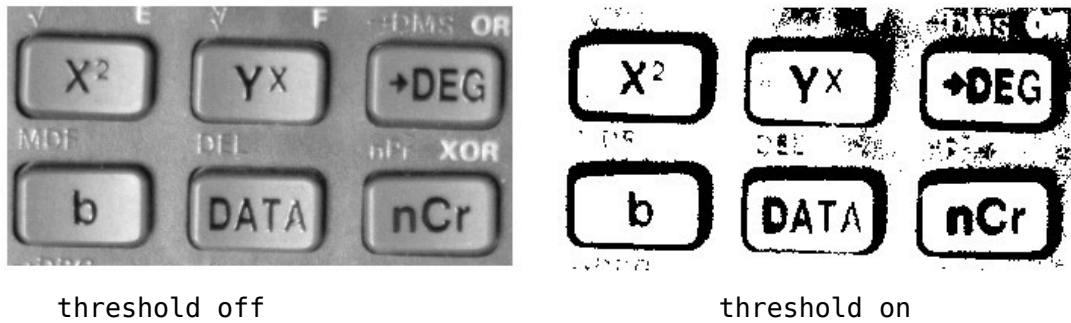
Description: For testing of camera logic and video data transmission, sensor data can be replaced by an internal gray scale pattern with pixel values of 0..255.



6.6.3 Setting threshold mode, command: GrayThreshold (optional feature)

Command: GrayThresholdEnable
 and: GrayThresholdAbs

Description: With this command the threshold mode can be activated. All pixels above the threshold level in the image will be output as white while all pixels below will be output as black. The threshold relates to the 10 bit sensor data. This feature is especially useful with the binarization mode.



6.6.4 Setting binarization mode, command: BinaryModeEnable (optional feature)

Command: BinaryModeEnable

Description: With this command the binarization mode can be activated. Every pixel is output as 1 bit. Because the datarate decreases there are higher frame-rates possible.

6.6.5 Read firmware version, command: FirmwareVersion

Commands: FirmwareVersionFPGA
 FirmwareVersionController
 FirmwareVersionBootloader

Description: With these commands the camera firmware versions can be read out. For example 'FirmwareVersionFPGA' may return a value of '109' which means a version of 1.09



7 MC Control Tool

The MC Control Tool must be installed on a Windows PC. (Win9x, WinNT, Win2K, WinXP) by means of the setup software. See also www.mikrotron.de to download the latest version.

This software provides an almost self explaining user interface to modify any camera parameter. The description of the parameters follows the marked chapters in this user manual.

To use this tool with the *EoSens* camera the serial interface is integrated in the GigE interface. You do not need any other additional cable.



8 Firmware

The camera possesses programmable devices, which are working with some firmware packages. New cameras were programmed with all needed firmware packages and will not need any update.

For customized firmware or additional features the camera offers the possibility to update some of the firmware versions. The procedure of updating depends on the firmware package.



**Do not update more than 1 firmware at the same time.
In case of updating more than 1 firmware, please start with application program, then FPGA program follows.**

8.1 Microcontroller firmware

The microcontroller works with 2 programs, the bootloader and the application program.

The bootloader is the basic program of the microcontroller, which ensures some basic functions (e.g. communication, loading application program) and cannot be changed or updated. In standard use of the camera it will never work in the bootloader program. It's only used for updating the application program.

The application program is the active microcontroller program in the camera, which supports communication, data handling and FPGA program updates.

See description of update procedure in chapter "Firmware update procedure".

8.2 FPGA firmware

EoSens's logic is integrated into a FPGA (**F**ield **P**rogrammable **G**ate **A**rray), which's configuration is stored in an EEPROM. Upon power up or a command the FPGA is loaded with this configuration. Configuration data can be downloaded via the serial interface. Mikrotron may provide configuration files (*.ibf) on request. After download of configuration data, this data is permanently stored in EEPROM and the FPGA is configured with the new data. Besides a power cycle or the `:c` command can be used to reconfigure the FPGA with the internally stored configuration data.

See description of update procedure in chapter "Firmware update procedure".

8.3 Firmware update procedure

Before you disable the loaded firmware please ensure that you have an adequate application firmware version to load (e.g. *EoSens...A101.ibf* for application firmware, *EoSens...F101.ibf* for FPGA firmware).



**After this command the camera may not be able to deliver any images, load/send/store register or profile data. The status led of the camera will turn to red.
YOU CAN NOT UNDO THIS COMMAND.**

- Start MC Control Tool and select “*EoSens*” camera. Wait until the info screen displays serial no. and firmware.
- Select in menu “Tools” “Update microcontroller firmware” or “Update FPGA firmware”
- Choose file (e.g. *MC1364M626A101.ibf* for microcontroller or *MC136xM651F101.ibf* for FPGA) and open it. The file transfer will start immediately. While loading the LED will blink red



Download of *.ibf file via serial link takes app. 1 - 5 min depending on the used baudrate. There should be no loss of power or communication during this time!

- Wait until file transfer has finished and the status led stays on. If the upload of the file was successful, the led will turn to green, otherwise it will be red.
- Verify version in “*EoSens*” info screen. The new firmware version will be displayed. If the version is identical to the expected the camera is ready to use for capturing images.

9 Technical Data

9.1 Overview

MC1364 MC1365	Monochrome Bayer Filter
Number of pixel	1280 x 1024
Pixel size	14 x 14 μm
Active area	17.92 (H) x 14.34 (V) mm
Fill factor	40%
Sensitivity	25 V/lux.s @ 550nm
Spectral response	400..720nm monochrome 400..670nm color
Shutter	Electronic „Freeze Frame“ Shutter
Trigger	Asynchronous shutter, shutter time selectable with internal timer or by pulse width of trigger signal
Framerate and shutter timebase accuracy	+/- 50ppm
Internal dynamic	58 dB
Pixel saturation level	30000e ⁻
Power supply	8 ... 24 V
Power consumption max. Thermal resistance typ.	6 W 0.17°/W
Serial data link	RS-644 with GigE Vision® 9,6 – 115 KBd, 8 bits, 1 stop bit, no parity
Digital video	GigE Vision® compliant
Case temperature	+5..50°C
Shock & vibration	70g, 7grms
Dimensions (WxHxD)	63 x 63 x 47 mm
Case temperature	+5 ... +50° C
Weight	ca. 300 g
Lens mount	C-/F-mount (depending on adapter)

9.2 Sensor defect specifications

Parameter	Description	Limit
BrightPix	Amount of bright pixels (response higher than half scale) in a dark image. Dark image must first be FPN corrected.	< 10
DarkMeanOutput	Average value of a dark image (10-bit scale).	$0 < x < 235$
50%MeanOutput	Average value of a half scale image (10-bit scale).	$390 < x < 547$
FPN	Fixed pattern noise of a dark image should be smaller than 3.1% of the signal swing	< 3.1%
TotDefects	Amount of defect pixels in a half scale image. A defect pixel is defined as a pixel that has a response that is 20% off the median response of all pixels. The half scale image must be FPN corrected.	< 20
BadColumnOutput	Amount of bad columns in a half scale image. A bad column is defined as a column that has a response that is 10% off the median of the surrounding 40 columns. The half scale image needs to be FPN corrected.	0
BadRow	Amount of bad rows in a half scale image. A bad row is defined as a row that has a response that is 10% off the median of the surrounding 40 rows. The half scale image needs to be FPN corrected.	0
Cluster	Amount of clusters allowed See note 1.	0
Coverglass Dig/Scratch	Uniform illumination. Test sensor for defective pixels. Defects on cover glass will generate defect pixels. No defect pixels may be visible.	0

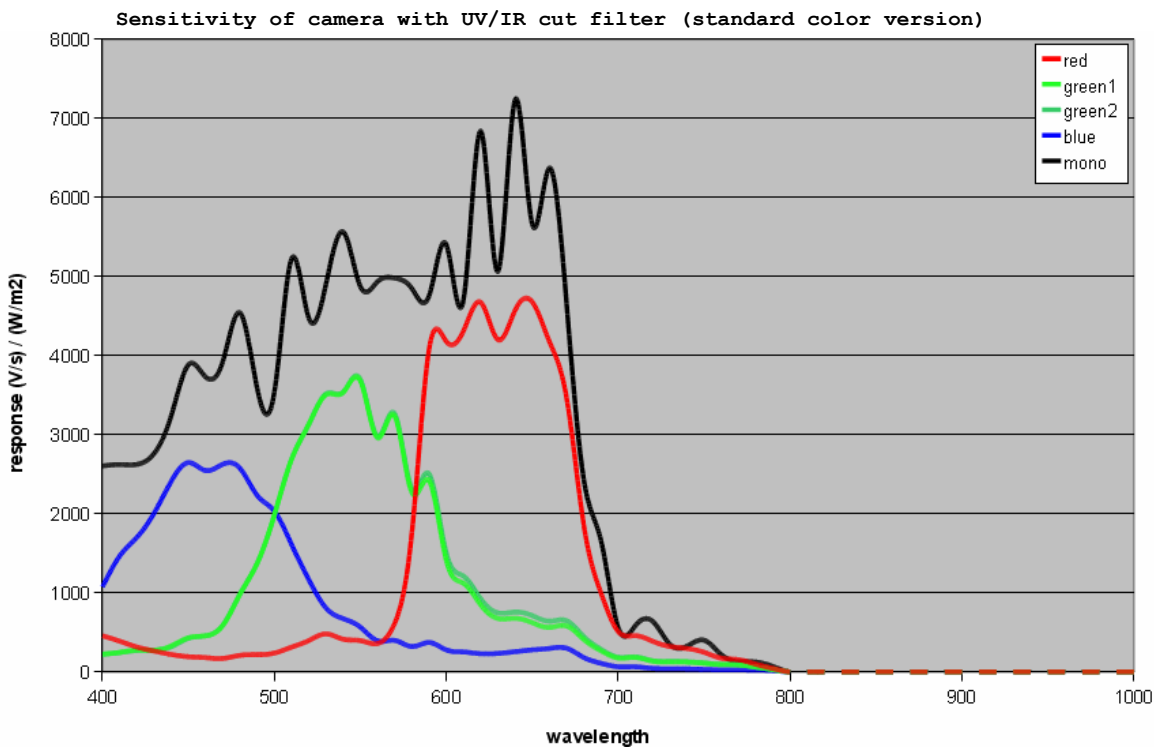
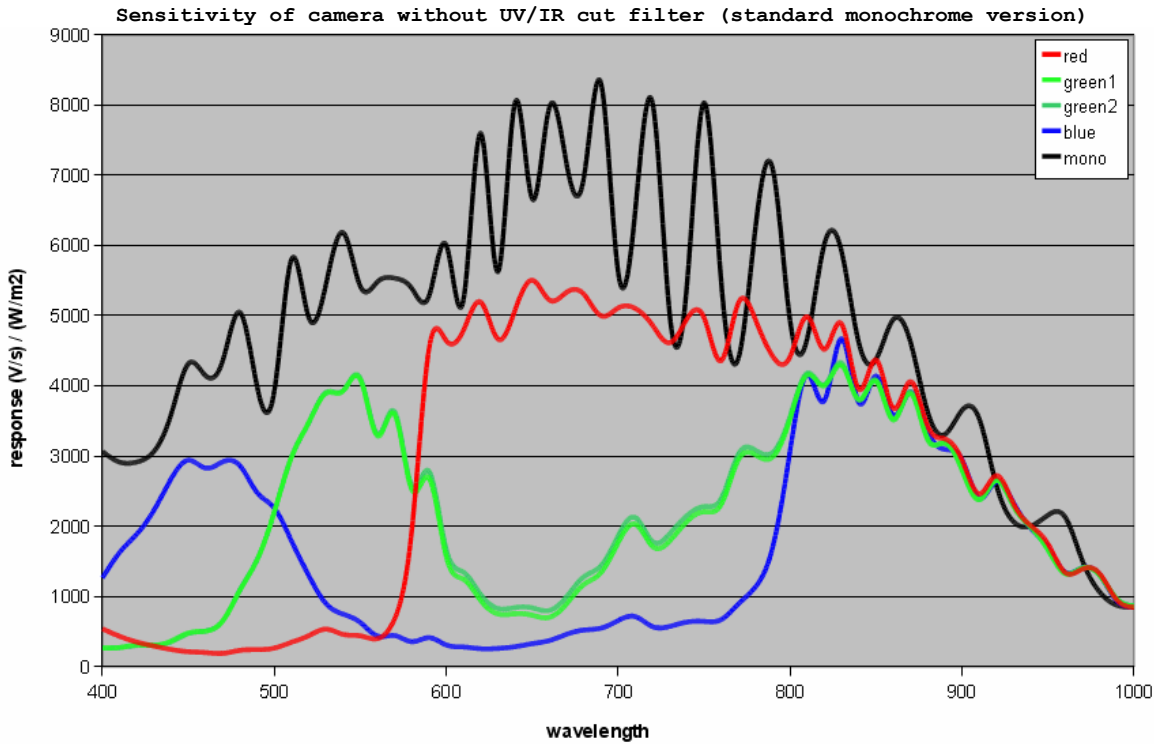
Measurement conditions:

1. Illumination source: High brightness led light source (white) Using a pinhole to imitate the lens setup in the application. F=5.4
2. Temperature is 25°C (logged during the test program) and 30 °C on wafer. Dark current limit is set at 30 °C
3. Definition of operation conditions:
 Nominal clock frequency is 310 MHz.
 Unity Gain
 Power supplies as specified in the datasheet (recommended operation conditions)
 Integr. times: Dark image short IT: 4µs, Dark image long IT: 1s, Other images: 2ms

Note 1: A cluster is defined as a group of minimal 2 and maximum 4 neighboring defect pixels (top, bottom or side; not diagonal). Clusters that exceed the maximum of 4 defect pixels are not allowed at all.

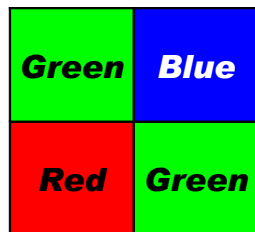
9.3 Spectral response

The charts below show the sensitivity of the monochrome and the color sensor with a bayer pattern filter on the sensor glass lid. The color camera is by default equipped with a UV/IR cut filter with a transmittance of 370-670nm resulting in a sensitivity shown in the second chart. By request all types of cameras can be delivered with or without UV/IR cut filter.



9.4 Bayer pattern filter

The EoSens color camera has a bayer pattern filter on the sensor glass lid. To get the color information the imaging software must decode the information. The pattern beginning from first row, first column is:



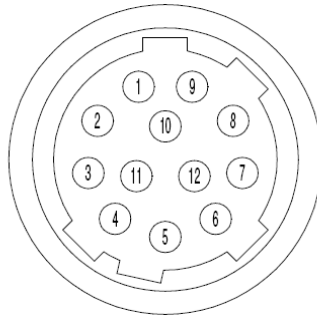
Because the pattern must always start at the same field with a color camera only even height and even offset-y is possible. The camera will automatically round down if odd values are entered. Also mind if using the 'ReverseX/Y' functions the pattern must be inverted too.

9.5 Connector pinning

9.5.1 Gigabit Ethernet Connector


Connector type: RJ45 female

9.5.2 Circular power connector, 12-pin



Pin	Signal	Voltage level
1	GND	
2	VCC	8 - 24V DC
3	STROBE_GND	
4	STROBE_OUT	LVTTTL 3.3V
5	TRIG_GND	
6	TRIG_IN	(LV)TTL 3.3 - 5V
7		
8		
9		
10		
11	VCC	8 - 24V DC
12	GND	

Manufacturer: Hirose
 Order no.: HR10A-10R-12P

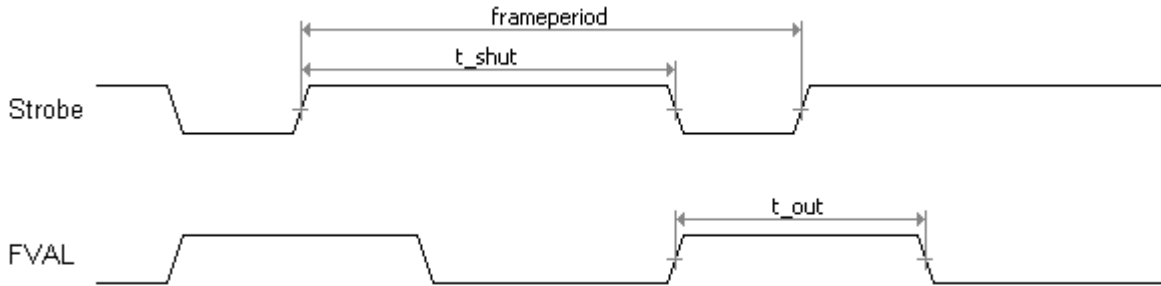
	<p>Before applying power to the camera we strongly recommend to verify the used pins of the power connector, the polarity (+/-) of the leads and the supply voltage.</p> <p>The camera may only be used with a supply voltage according to the camera specification. Connecting a lower or higher supply voltage, AC voltage, reversal polarity or using wrong pins of the power connector may damage the camera. If doing so, the warranty will expire immediately.</p>
---	--



9.6 Timing diagrams

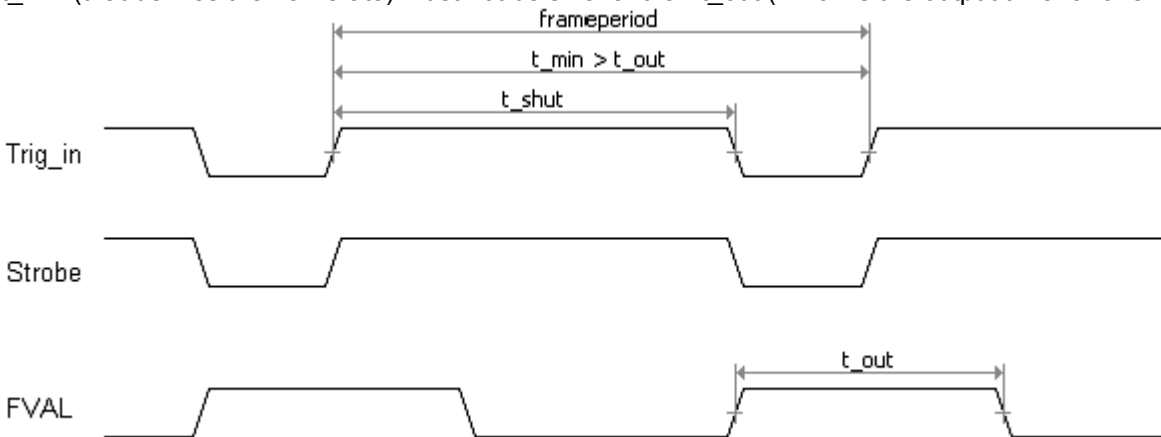
9.6.1 Timed (Free run with electronic shutter)

In this mode framerate and exposure time is controlled by the camera. At the strobe output (in power connector) there is a high signal while the camera exposes a picture.



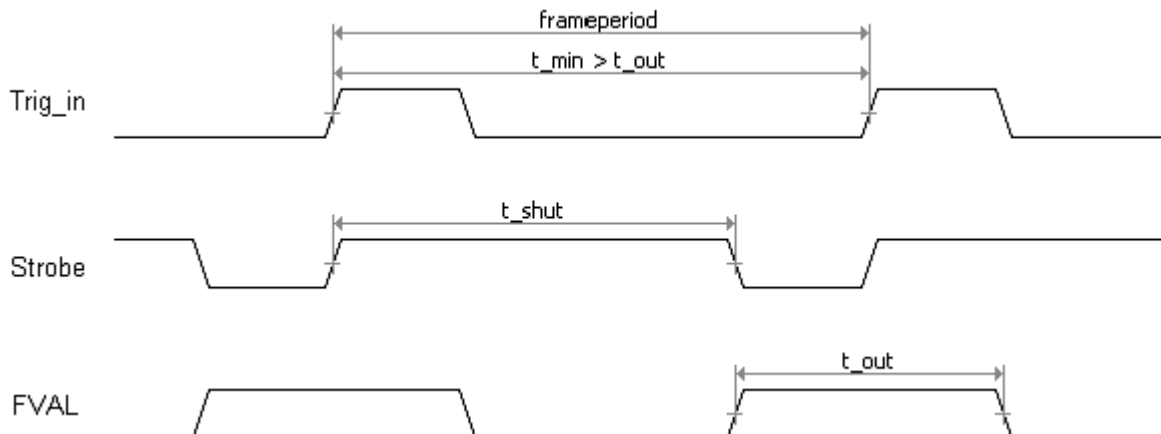
9.6.2 Trigger width (Pulsewidth mode)

In this mode framerate and exposure time is controlled by the TRIG_IN (in power connector) input. The time t_{min} (that defines the framerate) must not be smaller than t_{out} (which is the output time for one frame).

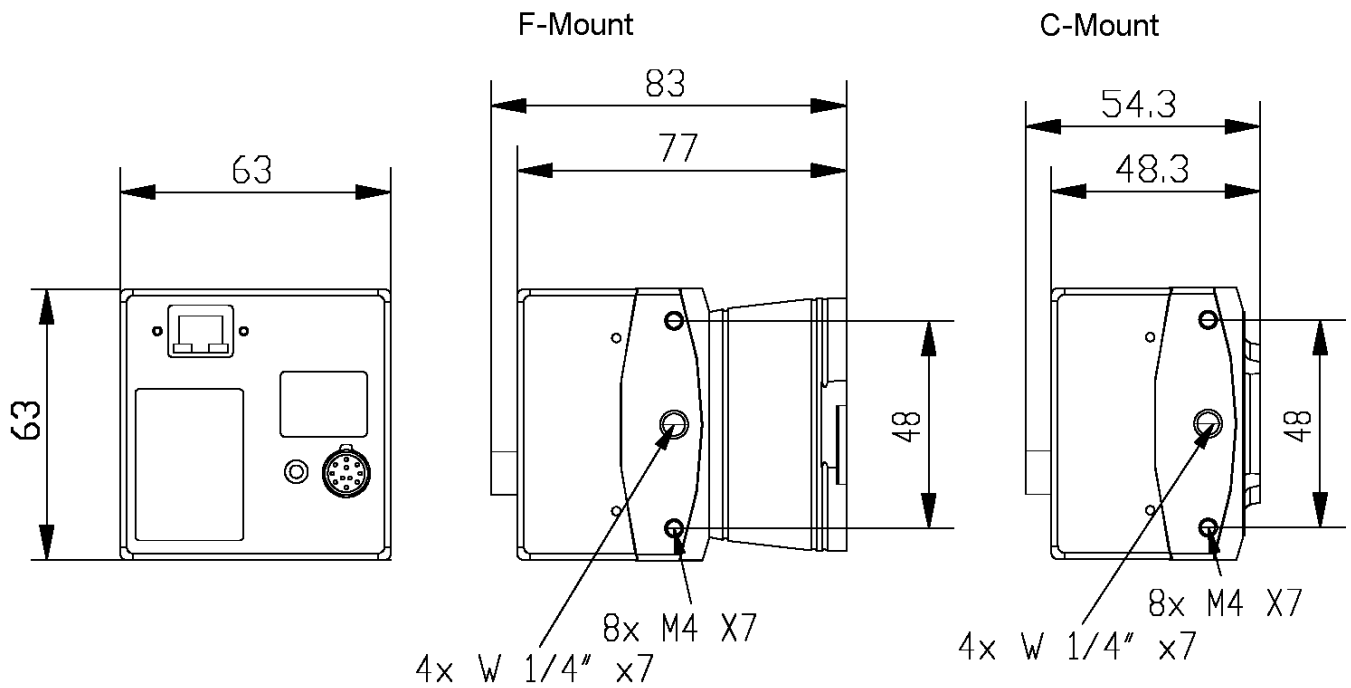


9.6.3 Trigger Controlled (External sync with internal timer)

In this mode the framerate is controlled by the TRIG_IN while the exposure time is controlled by the camera.



9.7 Mechanical dimensions



10 Quick start guide for GigE Vision®

This guide describes the basic steps to set up a connection to a GigE Vision camera using the EBus driver. Other driver configurations are possible but for high performance it is recommended to use the EBus Optimal Driver if possible.

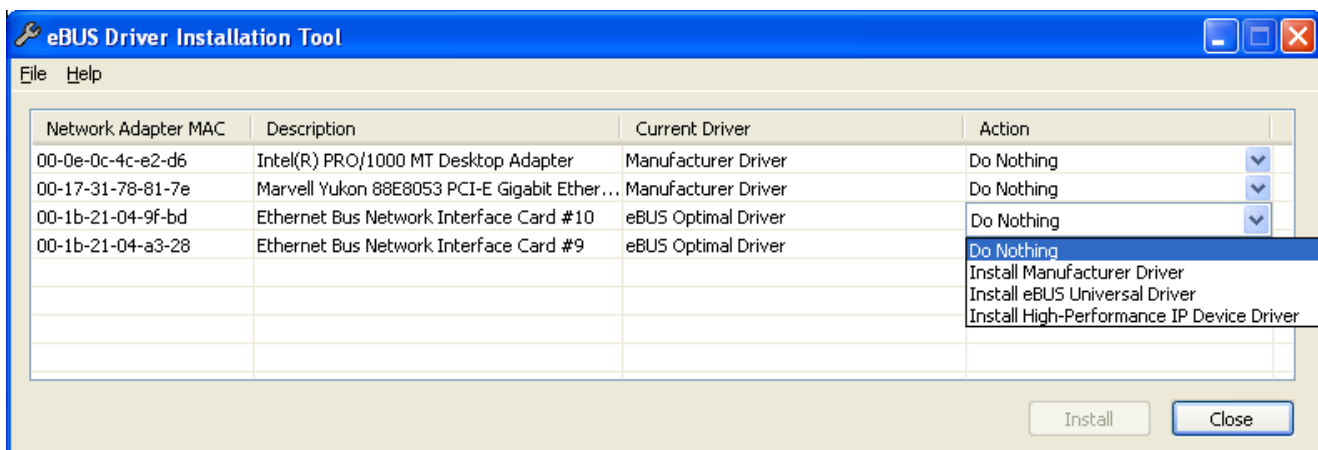
10.1 Software installation

This guide requires to install the **eBUS-PureGEV Package**. After installation documentation and programming samples can be found in <Program files>\Pleora Technologies Inc\eBUS-PureGEV Package\

Note: Since your camera is a GigE Vision device it's recommended to use the *PureGEV SDK* for writing camera applications. Alternatively the IPort SDK (*eBUS-Vision Package*) can be used.

10.2 Install the EBus Driver

Note: Your network interface card (NIC) must be configured correctly to be identified by the driver installation tool.

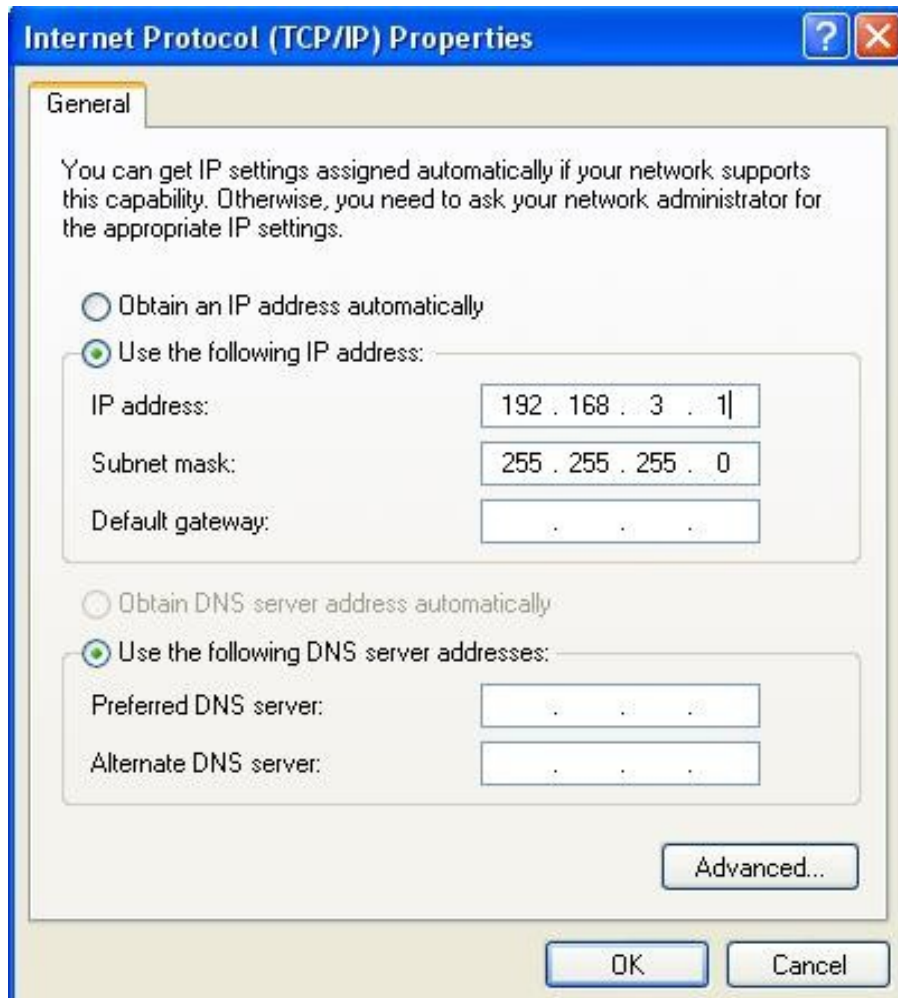


- Launch the driver installation tool (*Start->Programs->eBUS-PureGEV Package->Tools->Driver Installation Tool*) and choose the EBus optimal driver for your NIC if possible.

Note: If you don't use a Intel Pro/1000 Network card the EBus optimal driver is not available. Use the EBus universal driver instead.

- Exit the tool and reboot your computer.

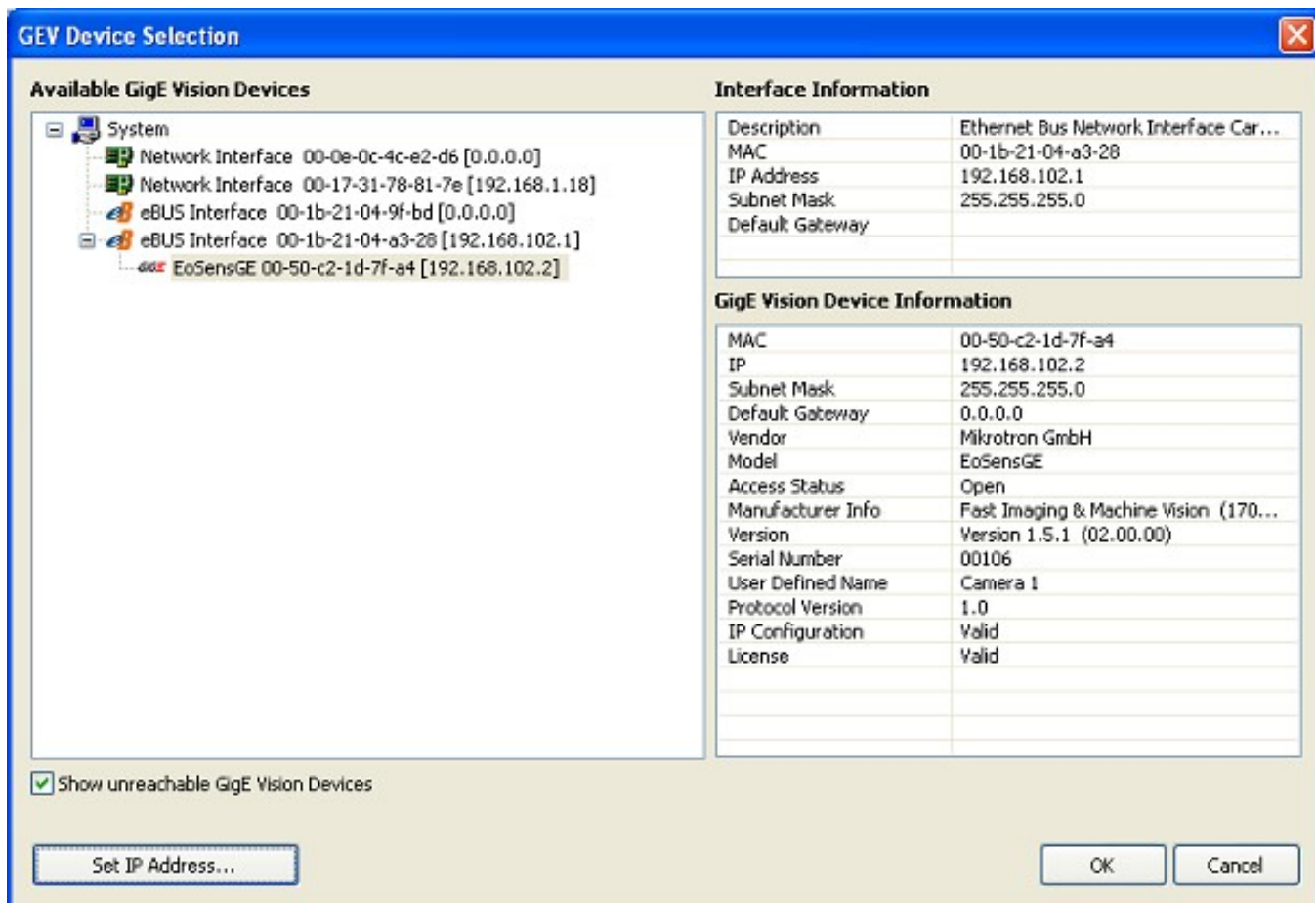
10.3 Configure the network card



- Go to the network property page and set the IP and the subnet mask for the NIC.

Note: If you have more than one network card in your computer make sure to configure the one connected to the camera.

10.4 Connecting using the GEV Player



- Start the GEV player
(Start->Programs->Pleora Technologies Inc-> eBUS-PureGEV Package ->GEV Player)
and click select. Your IP Engine should now appear in the list (This could take a while...). If your engine doesn't appear make sure your camera is powered and your

